

PROMOTING RELIABLE ACCESS & ACCURATE DELIVERY

To meet the challenges of cardiac resynchronization therapy (CRT), you need advanced LV delivery systems to match the tortuosity of your patient's anatomy. The Worley Advanced CSG is designed to offer you the flexibility you need to reliably and accurately place your LV leads at the target location.

Product Features

BRAIDED CORE variable shape design provides better torque control and flexibility

DEPTH POSITION MARKER for measuring the 43.5 cm distance between the braided core tip and the CSG

INTEGRATED PEEL-AWAY HEMOSTASIS VALVE handles like a standard peel-away introducer to reduce risk of blood loss and air embolism

SIDE PORT allows open access infusion and contrast injection during implantation

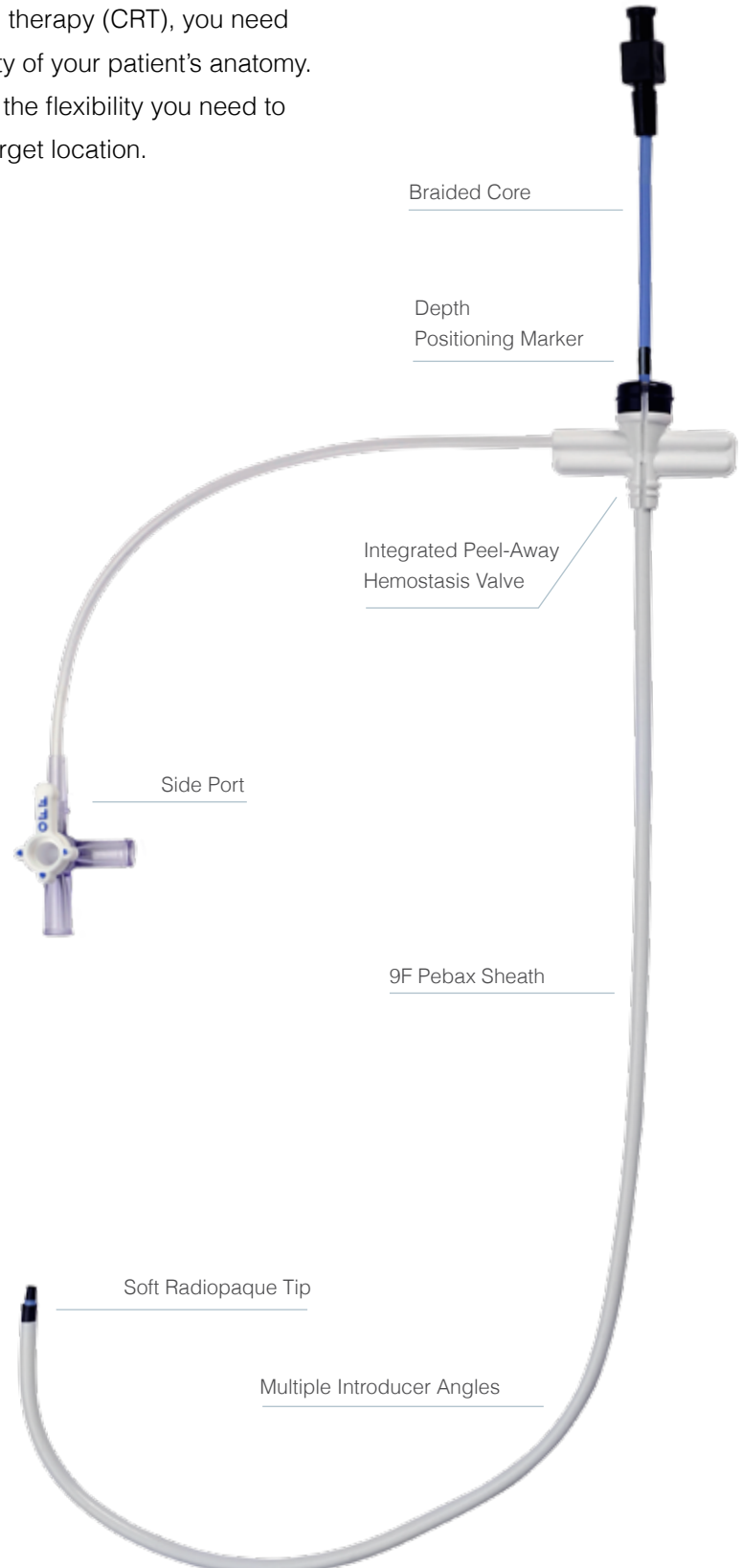
CRUSH RESISTANT PEBAX® SHEATH minimizes kinking and facilitates easy removal

9 French ID provides ample room to perform various advanced CRT implantation techniques

SOFT RADIOPAQUE TIP reduces risk of vessel wall trauma and improves fluoroscopic visualization

MULTIPLE INTRODUCER ANGLES for better CS lead placement

(Pebax® is a registered trademark of Arkema Group)

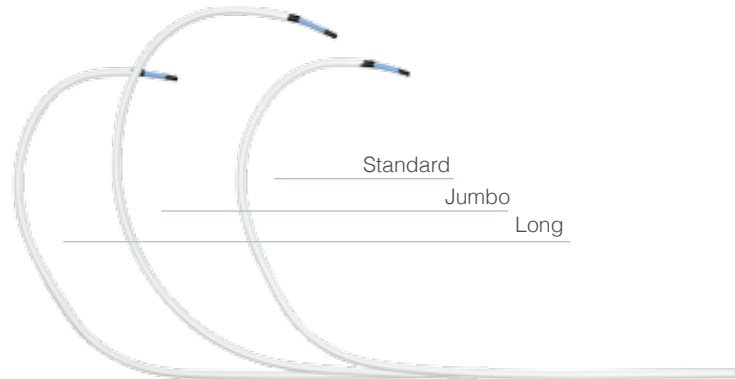


ADVANCING POSSIBILITIES FOR CORONARY SINUS CANNULATION

The Worley Advanced Coronary Sinus Guide's unique curve used in conjunction with the Braided Core helps you match your patient's anatomy to the length and curve of the Coronary Sinus Guide. The Braided Core inner catheter can be advanced as needed to create variable curves reducing the number of sheaths needed to facilitate a successful implantation.

THREE SIZES

Size	Length	Purpose
Standard	40 cm	for standard coronary anatomy
Jumbo	50 cm	large curve for marked atrial enlargement
Long	50 cm	for deep seating and end support



BRAIDED CORE VARIABLE SHAPE DESIGN

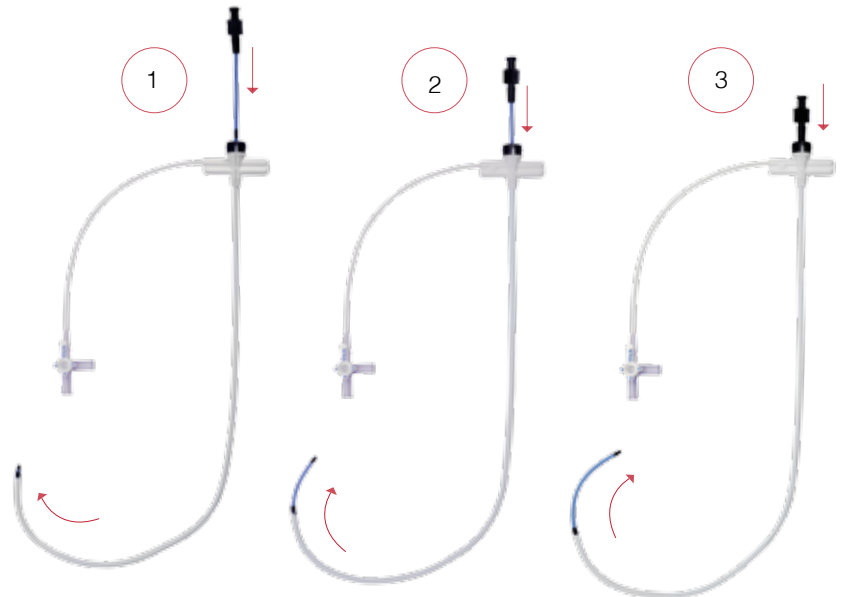
Reduces the number of sheaths needed to facilitate a successful implantation

Radiopaque tip for better fluoroscopic visualization

Inner catheter can be advanced as needed up to 6.5 cm from tip to facilitate CS cannulation in varying anatomy

Greater torque control when compared to extruded Coronary Sinus Guide

Proximal black depth-positioning marker for depth guidance and accurate placement



INTEGRATED PEEL-AWAY HEMOSTASIS VALVE

Integrated valve and hub design allows handling like a standard peel-away introducer

Minimizes the risk of lead movement or dislodgement during catheter removal

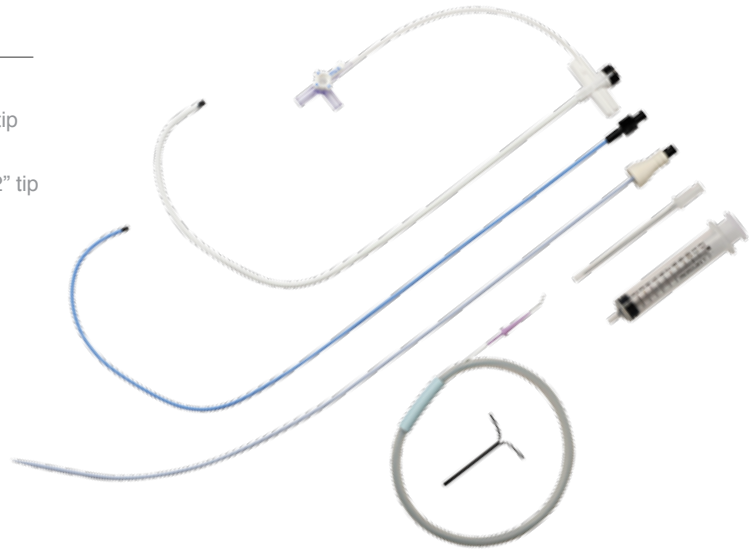
Provides easy splitting of the delivery sheath without the need of a separate splitter

ADVANCED CSG Coronary Sinus Guide

Part Number	Length	Size	Curve	Outer Diameter	Inner Diameter	Tip Diameter
WOR-CSG-B1-09	40 cm	9 F	Standard	0.157"	0.130"	0.122"
WOR-CSG-BL1-09	50 cm	9 F	Standard	0.157"	0.130"	0.122"
WOR-CSG-B2-09	50 cm	9 F	Jumbo	0.157"	0.130"	0.122"

KIT CONTENTS:

- PTFE Guide Wire:
135 Length, 45° angle, 0.035" x 135 cm J tip
- Curved Guiding Core:
9F introducer, 0.118" OD, 0.095" ID, 0.092" tip
- Straight Vessel Dilator:
0.038" ID
- Transvalvular Insertion (TVI) Tool:
1.75", 7F, 0.117" OD, 0.097" ID
- Needle:
2.75", 18G
- Syringe:
12 cc



PART OF THE WORLEY FAMILY OF ADVANCED LV DELIVERY SYSTEMS



For more information on Merit Medical's line of products for electrophysiology, contact Customer Service, (800) 35-MERIT or visit our website, www.merit.com.

403075001/A ID 082313